



Head of School: Mr Biddle BSc (Hons) PGCE NPQSL

“So speak encouraging words to one another. Build up hope so you’ll all be together in this, no one left out, no one left behind.”

1 Thessalonians 5:11 (msg)



Hope Community Respect Love



CONTACT US

Barnes Way, Dorchester, Dorset, DT1 2DZ, (01305) 262897, www.stosmunds.wessex.ac

WEBSITE & SOCIAL MEDIA

You can find lots of information on our school website including staff email addresses, trip information, term dates, DT food ingredients, the weekly newsletter and curriculum information. Please also like our Facebook page and follow us on X (Twitter) to keep up to date with school news. We also post informational films on YouTube. Images of pupils will not be used without parental permission.

St. Osmund's School



@stosmundsschool



@StosmundsS



COMMUNICATION

During the normal school day we welcome all communication about your child and their needs. In the first instance, please contact your child's tutor who is best placed to understand the holistic picture around your child. You can find email addresses for staff on our school website under 'Contact Us' and then 'Staff Contacts'. Should there be something of a more serious nature, please contact the Year Leader.

The school email account (**office@stosmunds.wessex.ac**) is monitored Monday—Friday. If your enquiry is urgent and time sensitive, please call the School Office on: 01305 262897.

If your enquiry is regarding attendance, please email: **absence@stosmunds.wessex.ac**

If your enquiry is regarding logging in for SIMS parent, please email: **loginissues@stosmunds.wessex.ac**

If your enquiry is regarding finance, please email: **finance@stosmunds.stosmunds.wessex.ac**

NEWSLETTERS

To try and minimise the amount of individual emails we send to parents, we send out our weekly newsletter, every Friday, which includes lots of information about what is going on in school such as clubs that are running the following week, dates for your diary and other news. Please take five minutes over the weekend to read the newsletter, even better with your child, so that you don't miss out on important information.

SCHOOL ABSENCES

For illness or medical absences please contact the school each day, that your child is absent, to explain the reason. This can be done via email (**absence@stosmunds.wessex.ac**), by leaving a telephone message or by speaking to someone in the school office. If your child experiences illness such as vomiting they are not required to wait 48 hours after the last bout of sickness before returning to school. Please note we do not require a letter from a doctor explaining the reason for the absence.

MEDICAL APPOINTMENTS

Please inform the office, in advance, of any medical appointments your child may need to attend during the school day. A copy of the appointment card/letter must be emailed to the absence email address. An adult must collect your child from school to attend appointments.

OUR SCHOOL

Opening in 1979 with 250 pupils, the school has expanded tremendously in the past 45 years. The main building is a single-storied building in well-established grounds and boasts up-to-date specialist facilities for science, music, drama, art, design technology, ICT and, since 2002, St Osmund's Community Sports Centre. In November 2017 a new 'Barnes Building' was built to hold the increase in school roll from 600 to 720 and now hosts our hot lunches as well as other teaching spaces.

MESSAGE FROM MR BIDDLE

Dear Parents and Carers,

I am pleased to welcome you to St Osmund's CE Middle School or "Ossie's" as we are affectionately called in our local community. As Head of School, I would like to share with you my vision for the future of the school.

In my experience, parents/carers and teachers want the same thing. We want our children to achieve their potential, we want them to work hard, we want them to be happy and we want them to become good citizens. It is my job to ensure that they are well taught and well behaved. We will strive to deliver strong academic and pastoral support.

My vision of Ossie's is a school based on strong principles: a school delivering a broad, balanced curriculum that allows pupils to develop their skills, knowledge and passions; a school that equips pupils for the next stage of their educational journey; a school where all members of our community are valued; a school where passionate teachers provide engaging, interesting lessons to pupils they care about; a school where pupils are happy and eager to learn and contribute to our community; a school that is civilised and well-ordered and a school where parents/carers are valued partners in ensuring that all of our pupils achieve. Our core Christian values of hope, community, respect and love nurture our school every day.

Yours sincerely,



Mr Biddle

Head of School



THE SCHOOL DAY

Staff Duty 08:25 – 08:35	Year 5	Year 6	Year 7	Year 8	Staff Duty 08:25 – 08:35
Doors open	08:30 – 08:40	08:30 – 08:40	08:30 – 08:40	08:30 – 08:40	Doors open
AM Registration	08:40 – 08:50	08:40 – 08:50	08:40 – 08:50	08:40 – 08:50	AM Registration
P1	08:50 – 09:50	08:50 – 09:50	08:50 – 09:50	08:50 – 09:50	P1
P2	09:50 – 10:50	09:50 – 10:50	09:50 – 10:50	09:50 – 10:50	P2
Whole school morning break 10:50 – 11:10					
P3	11:10 – 12:10	11:10 – 12:10	11:10 – 12:10	11:10 – 12:10	P3
P4	EARLY LUNCH 12:10 – 13:00 (1 st sitting until 12:35)	EARLY LUNCH 12:10 – 13:00 (2 nd sitting from 12:35)	12:10 – 13:00	12:10 – 13:00	P4
	13:00 – 13:50	13:00 – 13:50	LATE LUNCH 13:00 – 13:50 (1 st sitting until 13:25)	LATE LUNCH 13:00 – 13:50 (2 nd sitting from 13:25)	
P5	13:50 – 14:45	13:50 – 14:45	13:50 – 14:45	13:50 – 14:45	P5
R & R	14:45 – 15:15	14:45 – 15:15	14:45 – 15:15	14:45 – 15:15	R & R
Staff Duty 15:15 – 15:30					

TERM DATES 2025– 2026

AUTUMN TERM

Tuesday 2nd September 2025 Year 5 only

Wednesday 3rd September 2025, all years back – Thursday 18th December 2025 (incl.)

Half Term – Wednesday 22nd October 2025 – Fri 31st October 2025 (Incl.)

Christmas Holidays – Friday 19th December 2025 to Monday 5th January 2026 (Incl.)

SPRING TERM

Tuesday 6th January 2026 – Friday 27th March 2026 (incl.)

Half Term – Monday 16th February 2026 – Friday 20th February 2026 (incl.)

Easter Holidays – Monday 30th March 2026 – Monday 13th April 2026 (incl.)

SUMMER TERM

Tuesday 14th April 2026 – Friday 17th July 2026 (incl.)

Bank Holiday – Monday 4th May 2026

Half Term – Monday 25th May 2026 – Friday 29th May 2026 (incl.)

Summer Holidays – Monday 20th July 2026 – Return date TBC

Inset Days School Closed to Pupils

Monday 1st September 2025

Wednesday 22nd October 2025

Thursday 23rd October 2025

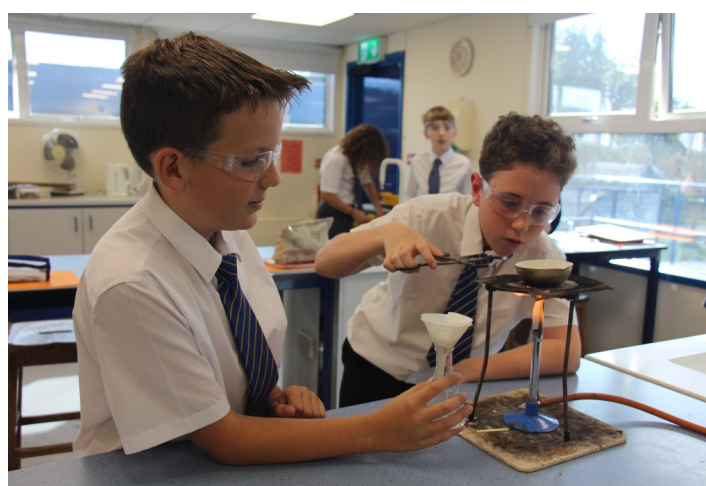
Friday 24th October 2025

Friday 19th December 2025

Monday 5th January 2026

Monday 13th April 2026

Friday 1st May 2026



COMMUNICATION HOME

An essential part of our work together involves forming a strong partnership between students, home and school so that we can best support your child. A key aspect of this partnership is regular communication. We are using the Arbor Parent app, as our method of communicating key information to you.



Arbor Parent App ⁴⁺

Parent & Guardian Portal
Arbor Education Partners
Designed for iPhone

#3 in Education

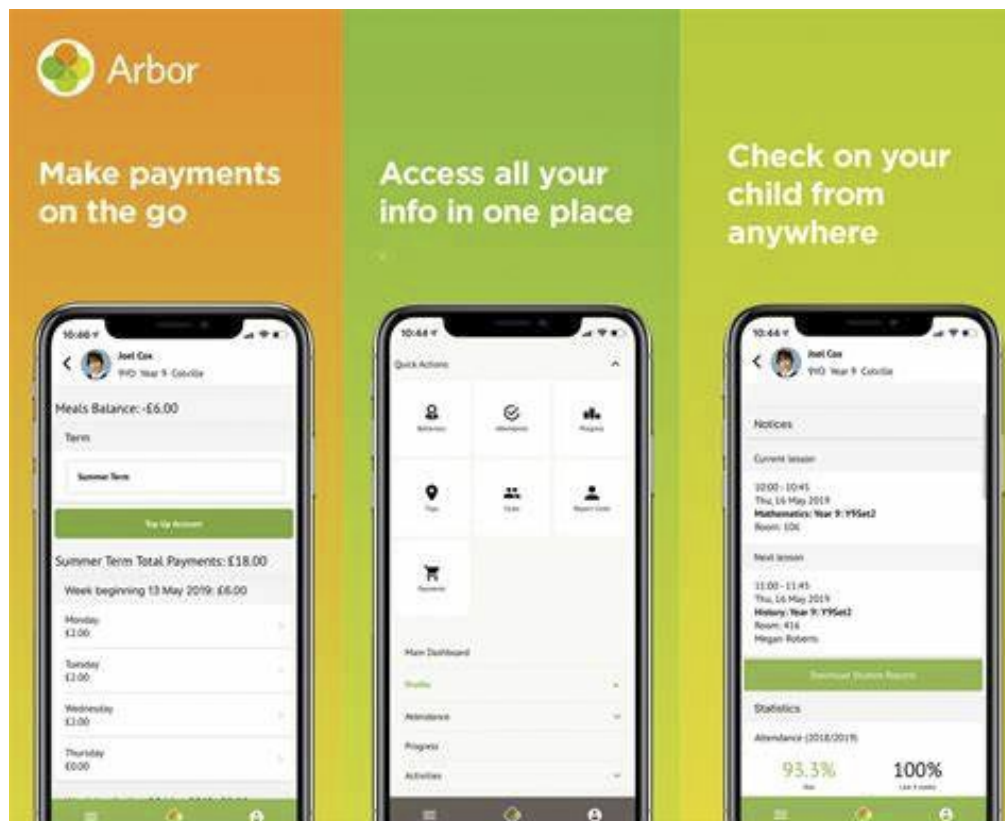
★★★★ 1.4 + 1.3K Ratings

Free

The Arbor Parent app is used to share with you the following information regarding your child:

- Daily attendance
- Daily behaviour and reward summary
- School report (end of term)
- Assessment scores (every half term)
- Homework set
- Timetable
- Activities attendance (after school clubs)
- Messages
- School calendar

Details of how to log into the app will be sent out in September.



EMAILS

Other correspondence, such as letters and our weekly newsletter are sent via email so please make sure that we have the correct email address for you on our system. If you have any queries please email office@stosmunds.wessex.ac

PAYMENT SYSTEM

To make any payments to school (for trips, replacement locker keys, calculators, revision guides etc.) you will need to do it through your Arbor Parent app. You will receive details of how to log in to this in September. **We can no longer take cash or cheques at the school office.** If you require assistance with this please contact the school office.



FIRST AID AND MEDICATION

Parents are asked to make the school aware of any medical condition affecting their children and this information is retained in each child's confidential file. When children are ill at school, the office staff will contact parents identified as the emergency number. Please make sure you notify the school office or use the SIMS app to change your contact details. Minor accidents will be dealt with by our trained First Aiders at school but for all accidents of a more serious nature parents/carers will be contacted and/or medical assistance sought.

If your child needs to bring medication of any kind to school, a consent form (available from the office or school website) **MUST** be completed to enable staff to administer the medication. Medication should be named and left with the office staff and **should not be kept by the child.** An asthma inhaler (named) may be carried by the child. We request that asthma sufferers leave an extra inhaler in the office in case of an emergency. Children who have Epipens for allergies should follow the procedure as given by their health advisors.

SCHOOL TRANSPORT

Please contact Dorset Transport (Tel: 01305 224537) with all queries regarding school buses. Please call them with any changes of address, if your child no longer needs to use the school bus or if your child has lost their bus pass. Please ensure that your child has their bus pass with them every day.



WESSEX SCHOOLS MUSIC LESSONS

Please could you make sure that your child knows the time that their music lessons takes place. It would be helpful if you could write it in their link book so that they have a reminder. They then need to take themselves to their music lesson at the correct time. Students must take ownership of this as Wessex Schools Music teachers will not go and find them if they do not turn up and their lesson will be missed.

<https://music.wessex.ac/>



LUNCHES

Hot school meals are provided by Local Food Links. See the next page for more information.



PACKED LUNCHES

Parents/Carers of pupils who do not have hot school meals are expected to provide their children with packed lunches that are consistent with the nutritional standards based on the EatWell plate model and the School Food Trust guidelines. Parents are advised to bring packed lunches in insulated bags with freezer blocks where possible.

Packed lunches should not include: Sweets/confectionery/chewing gum, fizzy or sugary drinks, energy drinks. **Items containing nuts are not allowed in school.** Although these are healthy, some children are allergic to nuts and they can cause a severe reaction even when in other pupils' lunches.

WATER BOTTLES

It is recognised that the concentration and behaviour of children improves when they drink water throughout the day. Dehydration can give children headaches and make them tired. Therefore, children must bring in water bottles daily. This is in addition to their packed lunch drink.



SCHOOL LOCKERS

Students can access their lockers at the beginning of the day, at morning break and at the end of the day.

If students are prepared to bring something valuable to school they must be prepared to carry the risk of something happening to it. If it's truly valuable then please leave it at home.

If students do bring something valuable to school (i.e. mobile phone) then they must store it in their locker. We do not allow mobile phones in bags around the school; this significantly increases the potential for problems in lessons and at break times. Students must respect their locker and the possessions of others - **students must not interfere with anyone else's locker.** We will remind students of this in school but please support us by also talking to your child about this at home.

If you require a replacement locker key you can purchase one via your parent app for £3.00.



UNIFORM



School uniform develops a feeling of self-esteem among students and does much to eliminate feelings of inequality as well as projecting a positive image for the school. This school has a uniform policy and we ask for the co-operation of parents in ensuring that uniform is worn at all times. If for any reason, this is not possible, please leave a note in your child's home link book.

Items marked * bear the school logo; these as well as school ties can be ordered directly from: Dorset Schoolwear (<https://dorsetschoolwear.shop/>) Orders can be delivered to the school, free of charge, within five working days during school term time.

Our school uniform is gender neutral; formal grey or black skirt, trousers or shorts (no denim or corduroy), white shirt with school tie, navy school sweatshirt* (no hoodies). Grey, black or white socks, black/navy/grey/skin-coloured tights (no leggings). Black leather/leather-looking shoes/trainers must be worn at all times including on the way to and from school. Footwear must be 100% black (no additional colour), low-heeled, no high ankle or boots. We strongly advise formal school shoes; canvas shoes are not acceptable footwear.

JEWELLERY

Pupils are only allowed to wear one plain stud in each ear, 'sleepers' are not allowed. NO OTHER body or facial piercing is permitted. Bracelets, rings and necklaces are not permitted. Excess items of jewellery will be confiscated, and parents may be asked to collect these items from the school office. At St. Osmund's we expect pupils to wear sensible school-wear rather than the latest fashion items. This includes hair colour/styles; hair must be natural colours. Makeup (including nail varnish, acrylic nails and false eye lashes) is NOT to be worn in school.

PE & GAMES

Indoor kit: navy blue round-necked t-shirt*, plain navy-blue shorts, leggings, tracksuit bottoms (navy blue/black) or 'skorts', white socks, trainers. Outdoor kit: In addition to the above list, St. Osmund's rugby shirt* or PE hoodie*, navy football socks. For contact and field sports (such as rugby, football and hockey) the wearing of sports mouthguards, shin pads and studded boots is strongly recommended but not enforced. In cold weather we encourage pupils to layer up with either their St. Osmund's rugby shirt or hooded sweatshirt or both. Long hair must be tied up, all wristbands, watches (including sports watches) and jewellery must be removed. All earrings must be removed for PE and Games lessons. We strongly advise that if ears are to be pierced, this should happen at the start of the summer holiday so that the earrings can be removed for these lessons starting in September. If earrings cannot be removed, then parents must provide plasters or medical tape for them to be covered. This is not the responsibility of the PE department.

PLEASE MARK EACH ITEM CLEARLY WITH THE PUPIL'S FULL NAME SO IT CAN BE IDENTIFIED IF FOUND.

OTHER ITEMS:

Please provide your child with a suitable pen (not a ball point). A 'Berol' Handwriting Pen is acceptable. Your child will also need a pencil, a 30cm ruler, eraser, purple pen, colouring pencils (not felt tips), a calculator (Key Stage 3) if possible and a medium-sized school bag. A separate bag for PE and Games kit is a good idea, but should not be too large that it will not fit in school lockers. Should a pupil bring their phone/device to school it should be placed in their school locker for the duration of the day. The school does not accept any responsibility for loss or breakage of the phone/device. The school also reserves the right to retain devices should there be any inappropriate usage during the school day.



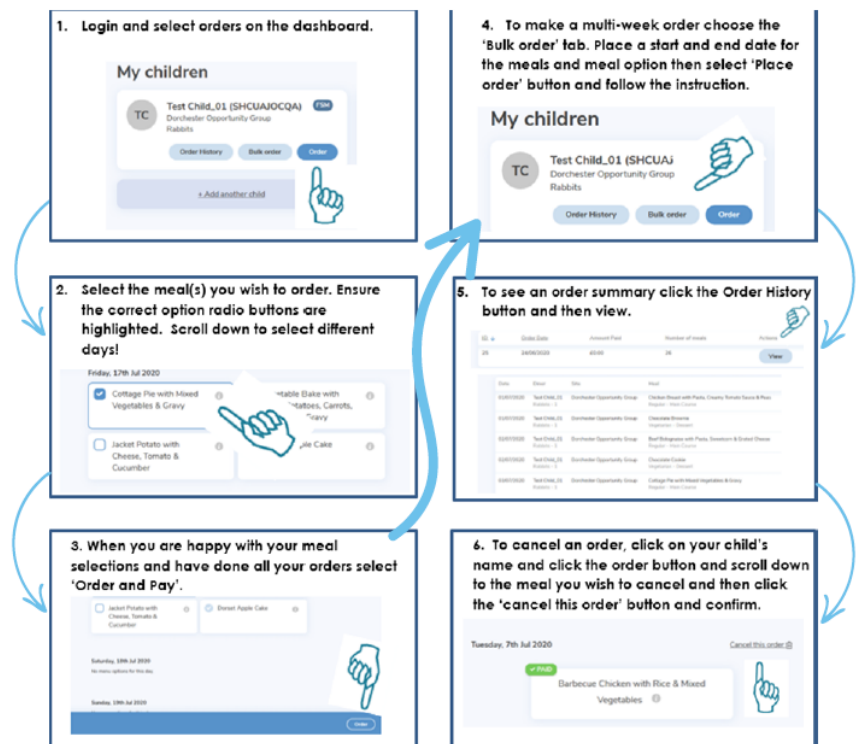
LOCAL FOOD LINKS

To use this service, you need to register with Local Food Links online at www.localfoodlinks.org.uk and enter your unique code (please see separate letter from Local Food Links). All meals are ordered and paid for online one week in advance. Every half term a new menu is available so it is advisable to book all your choices when the new menu arrives. If your child has any special dietary requirements or allergies you must complete a form (which can be found on our website) and send to Local Food Links. The system is easy to use but if you have any further problems you can talk to the Local Food Links team on 01308 420269.



6 EASY STEPS TO ORDER ONLINE

Once you have your child's 10 digit code you can register at <https://my.localfoodlinks.org.uk/> to order your child's meals. Please contact your school secretary if you do not have a code or email support@localfoodlinks.org.uk





START YOUR SCHOOL MEALS JOURNEY WITH LOCAL FOOD LINKS



FRESH. HEALTHY. TASTY.



Since 2006, Local Food Links has proudly been serving nutritious school meals, using high-quality, local ingredients. Our menus are designed to support children's health and give parents peace of mind.

WHAT WE OFFER

- ✓ £2.80 for two courses for pupils in Year 5+.
- ✓ The School Food Standards determine Primary School portion sizes (Reception to Year 6) and Secondary School portion sizes (Years 7 to 11).
- ✓ Vegetables, pasta, rice, potatoes, bread, fruit and meat portions will be approximately 50% larger for a secondary school meal (Year 7 to 11).
- ✓ Three daily meal options, each served with a dessert or fresh fruit
- ✓ Packed lunches for trips & event days, at the school's request. Includes: sandwich, crudites, dairy item, flapjack and fruit



♥ ALLERGIES & SPECIAL DIETARY NEEDS

We're committed to ensuring every child – including those with allergies or special dietary needs – can enjoy a safe, tasty school meal.

- ✓ You can easily check ingredients for each dish by clicking on the meal choice within the online ordering system.
- ✓ Common allergens are also listed on our website <https://www.localfoodlinks.org.uk/>
- ✓ We can offer bespoke meals for medically confirmed allergies or dietary needs.

Allergy forms are available from your school or downloaded from www.localfoodlinks.org.uk

To discuss your child's needs, contact **Barry Dovell on 01308 428921** or email barry.dovell@localfoodlinks.org.uk

✓ 9 REASONS TO CHOOSE SCHOOL MEALS

- ✓ We use locally sourced ingredients from Dorset and the South West, and all our fish is sustainably caught.
- ✓ Our meat is British and all our eggs are free range and from Dorset .
- ✓ Our fresh homemade Tomato Sauce contains 5 different 'hidden' vegetables
- ✓ Only 1% of packed lunches contain the same nutritional value as a hot school meal
- ✓ Parents can save over £500 per year by taking up free school meals for KS1 and entitled Year 3+ children
- ✓ We operate a 'Nut Free' kitchen policy throughout the company and are part of the Dorset Sustainable Palm Oil Community
- ✓ School meals are tasty, nutritious, and give children the goodness their growing bodies need.
- ✓ Our menus meet the food school standards for school meals.
- ✓ Research shows that children concentrate better & stay more focused after a hot school meal and that children enjoy the social experience of eating a meal with other children & are often more likely to try new things.

STAY CONNECTED



Follow us on **Facebook** and **Instagram** for news, recipes, meal photos, and daily meal choices.

For **email** updates, sign up at www.localfoodlinks.org.uk or return the attached sign up form to your school.

We only send occasional emails with useful or important information – never spam, and we never share your details.

LOST PROPERTY

Lost property is located in the Sports Centre, which can be accessed by parents after 3.30pm each day. **Please clearly label all uniform with your child's FULL name (not just initials).** Once per half term, the lost property is sorted by parent volunteers and named items are returned to the students.

FROSSIES (FRIENDS OF OSSIE'S)

Frossies welcomes you and your children to the school. You may be new to the school or have older siblings in other years, but you all share one thing in common, a child who is beginning their St.Osmund's journey in Year 5 this term. Frossies is here to support and enrich that journey by helping to organise events, both fundraising and social, for the pupils and their families.

Who can join Frossies?

Parents from all years of the school, members of the teaching or support staff.

What does Frossies do?

The main focus of Frossies is to organise events and activities that will raise funds and be enjoyable for St.Osmund's families for example: Ossie's Fest, the Christmas fair, school discos, quiz nights and other one off events. It also serves as an avenue of communication between staff and parents.

What happens to the money raised by Frossies?

The funds raised are used for the benefit of the school and the pupils. In the past money has been donated towards the cost of a library refurbishment, IT hardware and improving outside areas.

When and where are Frossies meetings held?

There are regular meetings held in the staff room after school. When an event needs to be organised a 'sub-committee' is formed with this group of people taking ownership of the event and having their own meetings at mutually convenient times.

It sounds time consuming and I am already so busy...

Participating in Frossies does not need to be a huge time commitment. You can attend every meeting and help at every event, or just donate your time and skill sets in the way that best fits in with your existing commitments. For example, we regularly appeal for parental help on the day of the Christmas Fair and school discos to run stalls and serve refreshments.

If you would like to be involved, please email frossies@stosmunds.wessex.ac



OSSIE'S OPPORTUNITIES

St Osmund's School offers a variety of extra curricular clubs. Ranging from sports to music and cookery to computing. To sign up to a club your child just needs to attend on the day. Sports clubs differ term to term and a weekly list is displayed in each classroom, on our website and on our weekly newsletter. After school clubs are 3:15—4:15pm, unless stated otherwise.

Once a child has signed up to a club, we would like them to attend regularly. If during the school day, a pupil decides that they would like to attend/or cancel a club, the office will not be able to facilitate contacting parents and the pupil will be told to keep to the arrangements that they have made with you.



OSSIE'S OUT OF HOURS CLUB



Do you know about our Ossie's Out of Hours club? We run a breakfast and after-school club, in the Barnes building, for working parents. It runs from 7.45am—8.30am for breakfast and then from the end of school until 5.30pm (5pm on a Friday), during term time only. The costs are £6 for a morning session and £12 for an afternoon session, with a 50% discount for siblings. We can also accept childcare vouchers as payment. The club is run by Ossie's staff and children receive a drink and a snack. If you would like to book your child into any sessions, please email Ms Prince at outofhours@stosmunds.wessex.ac

HOT CHOCOLATE FRIDAY

Each week, staff can nominate students who have demonstrated our school values of hope, community, respect and love. Students receive a hot chocolate and biscuits with Mr Biddle, on a Friday morning, along with a certificate to keep. Photos are posted on our Facebook page.



FREE SCHOOL MEALS & PUPIL PREMIUM

Pupil Premium is additional funding given to publicly funded schools to raise attainment and help the individual child by providing specific support. Parents of children who might be entitled are strongly encouraged to apply for Free School Meals because it enables schools to access additional funding which is used to provide support to improve access to learning. It is up to the school how the money is spent, but Ofsted check that we use it to help raise attainment of pupils from lower-income families. This provides a considerable amount of additional funding to St Osmund's school and can be used to really help children to achieve their potential as they move through their schooling.

Your child may be able to get free school meals if you get any of the following:

- Income Support
- income-based Jobseeker's Allowance
- income-related Employment and Support Allowance
- support under Part VI of the Immigration and Asylum Act 1999
- the guaranteed element of Pension Credit
- Child Tax Credit (provided you're not also entitled to Working Tax Credit and have an annual gross income of no more than £16,190)
- Working Tax Credit run-on - paid for 4 weeks after you stop qualifying for Working Tax Credit
- Universal Credit - if you apply on or after 1 April 2018 your household income must be less than £7,400 a year (after tax and not including any benefits you get)

Benefits of applying for free school meals

Registering does not mean that your child has to take up the free school meals if they don't want to. Additional benefits available for children in receipt of free school meals include funding for: £30 towards school shoes, £50 (Years 5 and 7) or £30 (Years 6 and 8) voucher for Dorset Schoolwear, free curricular day trips, DT/ART contributions, ingredients for food technology, SATs revision books, a calculator, stationery and more.

Students also receive funding towards school trips. More details can be found in the trips booklet which you will receive in September.

How do I apply?

Please go to <https://www.gov.uk/apply-free-school-meals> to apply.





POSITIVE RECOGNITION

There are many ways in which your **effort in lessons** and living out our school values of **hope, community, respect and love** are recognised and celebrated at Ossie's.

Learning Achievements

- Achievement points
- Bronze, silver and gold certificates
- Post cards home
- Verbal or written recognition
- Email or phone call home
- Year leader Award
- Headteacher Award
- Prize Giving (subject awards)



Well done!

St Osmund's CE Middle School

Living Out School Values



- Verbal or written recognition
- Email or phone call home
 - Year Leader Award
- Hot Chocolate Friday





St Osmund's
CE Middle School
Hope · Community · Respect · Love